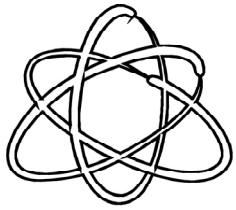


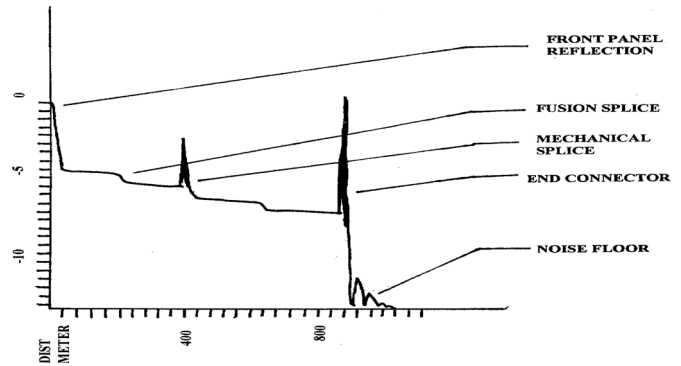
OTDR QUICK REFERENCE SHEET

Provided by:



ProLAN
Solutions
A Carlson Company

COMPONENTS OF AN OTDR TRACE



DETERMINING DISTANCE AND LOSS OF AN OTDR EVENT:

Figure 1:

850nm OTDR Trace of a fusion splice. In order to determine distance to event, place (A) cursor before dB step down (See figure 2).

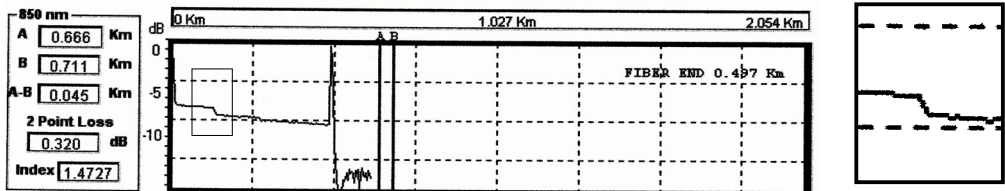


Figure 2 :

After placing (A) directly before the event, distance will be displayed in the top left box. To estimate dB loss place (B) cursor after dB step down.

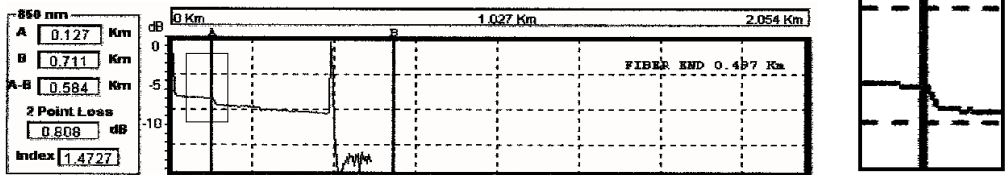


Figure 3 :

Once placing (B) directly after dB step down, dB loss est. will be displayed in the '2 point Loss' box.

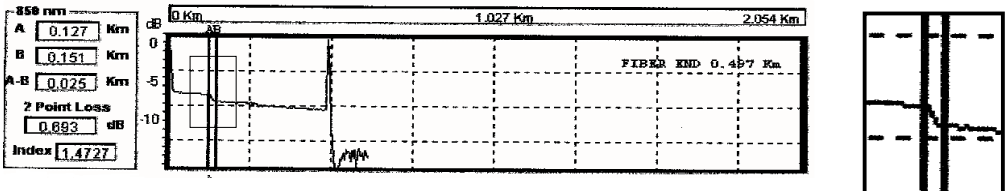


Figure 4 :

Following the same procedure as above, dB loss of the entire cable run can be estimated by placing (A) before first connector and (B) after the last. The use of a launch cord before and after the cable run will enable the operator to place the cursors before the first connector and after the last connector.

